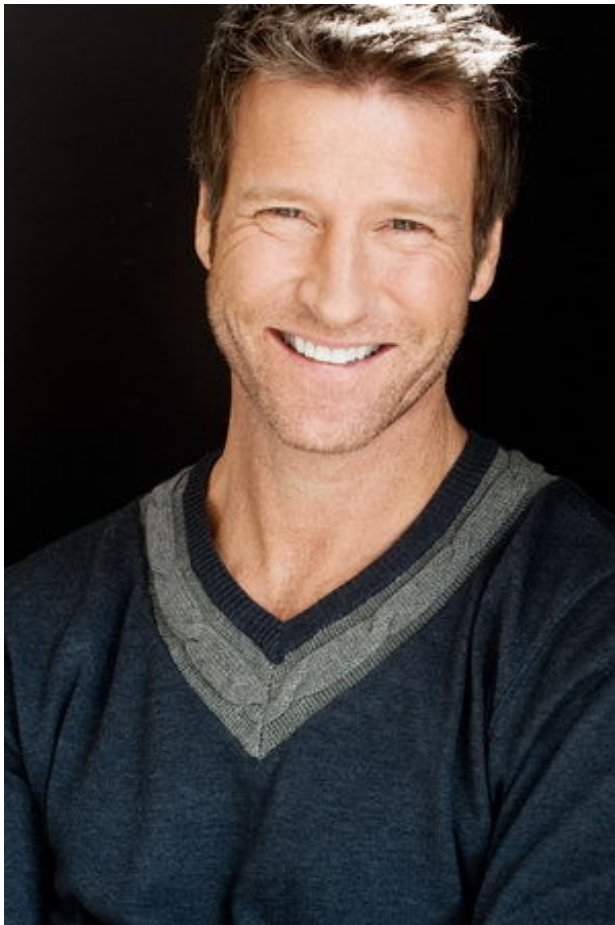


CENTRO MODELS

Ted Quinn

Height: 6' 1" **Suit** 42L **Shirt** 16.5x35 **Waist** 33" **Inseam** 32" **Shoe** 11.5 **Hair** Lt. Brown
Eyes Green



275 Union Blvd • 1700 Penthouse • Saint Louis, Missouri • 63108
314.421.9400 • Fax 314.421.9440

CENTRO MODELS

Ted Quinn

Height: 6' 1" **Suit** 42L **Shirt** 16.5x35 **Waist** 33" **Inseam** 32" **Shoe** 11.5 **Hair** Lt. Brown
Eyes Green



275 Union Blvd • 1700 Penthouse • Saint Louis, Missouri • 63108
314.421.9400 • Fax 314.421.9440

CENTRO MODELS

Ted Quinn

Height: 6' 1" **Suit** 42L **Shirt** 16.5x35 **Waist** 33" **Inseam** 32" **Shoe** 11.5 **Hair** Lt. Brown
Eyes Green



275 Union Blvd • 1700 Penthouse • Saint Louis, Missouri • 63108
314.421.9400 • Fax 314.421.9440

CENTRO MODELS

Ted Quinn

Height: 6' 1" **Suit** 42L **Shirt** 16.5x35 **Waist** 33" **Inseam** 32" **Shoe** 11.5 **Hair** Lt. Brown
Eyes Green



275 Union Blvd • 1700 Penthouse • Saint Louis, Missouri • 63108
314.421.9400 • Fax 314.421.9440

CENTRO MODELS

Ted Quinn

Height: 6' 1" **Suit** 42L **Shirt** 16.5x35 **Waist** 33" **Inseam** 32" **Shoe** 11.5 **Hair** Lt. Brown
Eyes Green



275 Union Blvd • 1700 Penthouse • Saint Louis, Missouri • 63108
314.421.9400 • Fax 314.421.9440

CENTRO MODELS

Ted Quinn

Height: 6' 1" **Suit** 42L **Shirt** 16.5x35 **Waist** 33" **Inseam** 32" **Shoe** 11.5 **Hair** Lt. Brown
Eyes Green



275 Union Blvd • 1700 Penthouse • Saint Louis, Missouri • 63108
314.421.9400 • Fax 314.421.9440